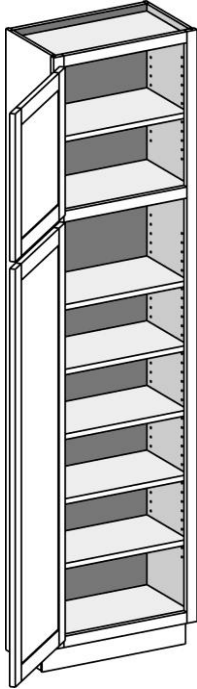


Utility Cabinet



AVAILABLE OPTIONS

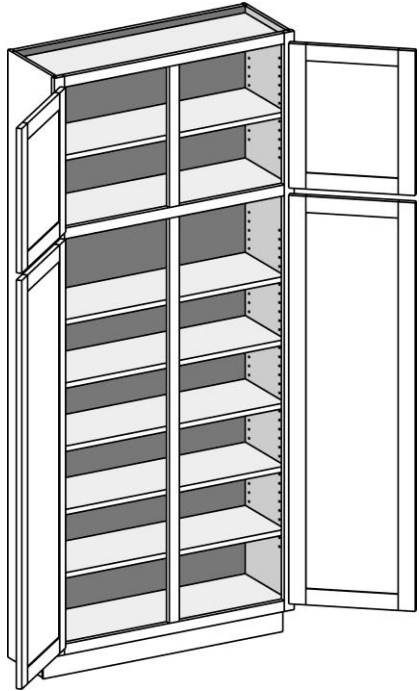
EXTEND STILE	EXPOSED END	FLUSH END	MATCHING INTERIOR
✓	✓	✓	✓
SHAPED TOP RAIL	FLUSH TOE	FLUSH TOE WITH ARCH	
✓	✓	✓	

Cabinet Code

Cabinet Information and Notes

UC1584	<ul style="list-style-type: none"> • 12-1/2" deep • 84" and 90" have six shelves • 96" units have a separate 4" toe platform and have seven shelves
UC1884	
UC2184	
UC2484	
UC1590	
UC1890	
UC2190	
UC2490	
UC1596	
UC1896	
UC2196	
UC2496	

Utility Cabinet



AVAILABLE OPTIONS

EXTEND STILE	EXPOSED END	FLUSH END	MATCHING INTERIOR
✓	✓	✓	✓
SHAPED TOP RAIL	FLUSH TOE	FLUSH TOE WITH ARCH	
✓	✓	✓	

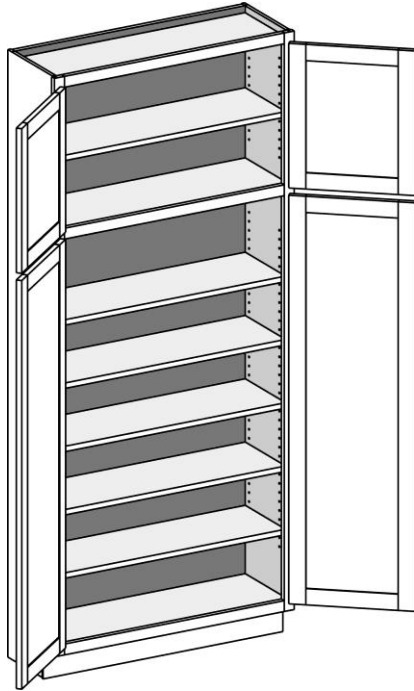
Cabinet Code

Cabinet Information and Notes

UC2784
 UC3084
 UC3384
 UC3684
 UC2790
 UC3090
 UC3390
 UC3690
 UC2796
 UC3096
 UC3396
 UC3696

- 12-1/2" Deep
- 84" and 90" have six shelves
- 96" units have a separate 4" toe platform and have seven shelves

Utility Cabinet w/Butt Doors



AVAILABLE OPTIONS

EXTEND STILE	EXPOSED END	FLUSH END	MATCHING INTERIOR
✓	✓	✓	✓
SHAPED TOP RAIL	FLUSH TOE	FLUSH TOE WITH ARCH	
✓	✓	✓	

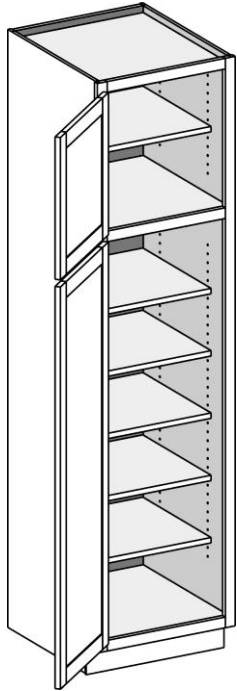
Cabinet Code

Cabinet Information and Notes

- UC2484BD
- UC2784BD
- UC3084BD
- UC3384BD
- UC3684BD
- UC2490BD
- UC2790BD
- UC3090BD
- UC3390BD
- UC3690BD
- UC2496BD
- UC2796BD
- UC3096BD
- UC3396BD
- UC3696BD

- 12-1/2" Deep
- 84" and 90" have six shelves
- 96" units have a separate 4" toe platform and have seven shelves

Utility Cabinet Deep



AVAILABLE OPTIONS

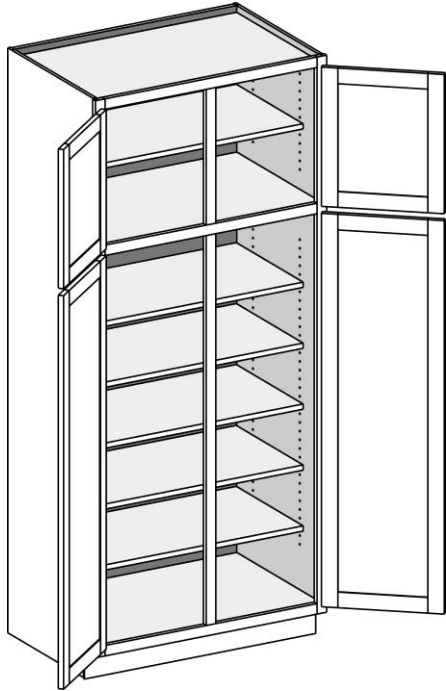
EXTEND STILE	EXPOSED END	FLUSH END	MATCHING INTERIOR
✓	✓	✓	✓
SHAPED TOP RAIL	FLUSH TOE	FLUSH TOE WITH ARCH	
✓	✓	✓	

Cabinet Code

Cabinet Information and Notes

UCD1584	<ul style="list-style-type: none"> • 24" Deep • 84" and 90" have six shelves • 96" units have a separate 4" toe platform and have seven shelves
UCD1884	
UCD2184	
UCD2484	
UCD1590	
UCD1890	
UCD2190	
UCD2490	
UCD1596	
UCD1896	
UCD2196	
UCD2496	

Utility Cabinet Deep



AVAILABLE OPTIONS

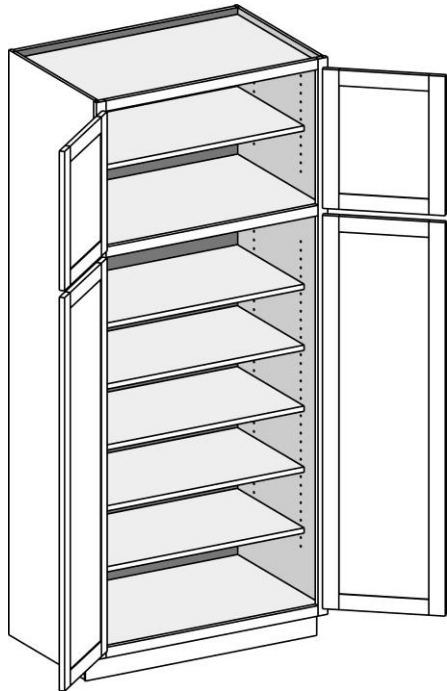
EXTEND STILE	EXPOSED END	FLUSH END	MATCHING INTERIOR
✓	✓	✓	✓
SHAPED TOP RAIL	FLUSH TOE	FLUSH TOE WITH ARCH	
	✓	✓	

Cabinet Code

Cabinet Information and Notes

UCD2784	• 24" Deep
UCD3084	• 84" and 90" have six shelves
UCD3384	• 96" units have a separate 4" toe platform and have seven shelves
UCD3684	
UCD2790	
UCD3090	
UCD3390	
UCD3690	
UCD2796	
UCD3096	
UCD3396	
UCD3696	

Utility Cabinet Deep w/Butt Doors



AVAILABLE OPTIONS

EXTEND STILE	EXPOSED END	FLUSH END	MATCHING INTERIOR
✓	✓	✓	✓
SHAPED TOP RAIL	FLUSH TOE	FLUSH TOE WITH ARCH	
✓	✓	✓	

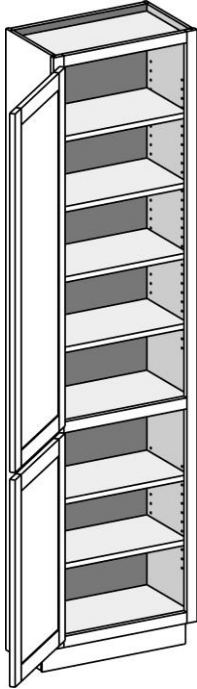
Cabinet Code

Cabinet Information and Notes

UCD2484BD
UCD2784BD
UCD3084BD
UCD3384BD
UCD3684BD
UCD2490BD
UCD2790BD
UCD3090BD
UCD3390BD
UCD3690BD
UCD2496BD
UCD2796BD
UCD3096BD
UCD3396BD
UCD3696BD

- 24" Deep
- 84" and 90" have six shelves
- 96" units have a separate 4" toe platform and have seven shelves

Utility Cabinet Reverse



AVAILABLE OPTIONS

EXTEND STILE	EXPOSED END	FLUSH END	MATCHING INTERIOR
✓	✓	✓	✓
SHAPED TOP RAIL	FLUSH TOE	FLUSH TOE WITH ARCH	
✓	✓	✓	

Cabinet Code

Cabinet Information and Notes

UCR1584

- 12-1/2" Deep

UCR1884

- 84" and 90" have six shelves

UCR2184

- 96" units have a separate 4" toe platform and have seven shelves

UCR2484

UCR1590

- Lower section aligns with 34-1/2" base cabinet

UCR1890

UCR2190

UCR2490

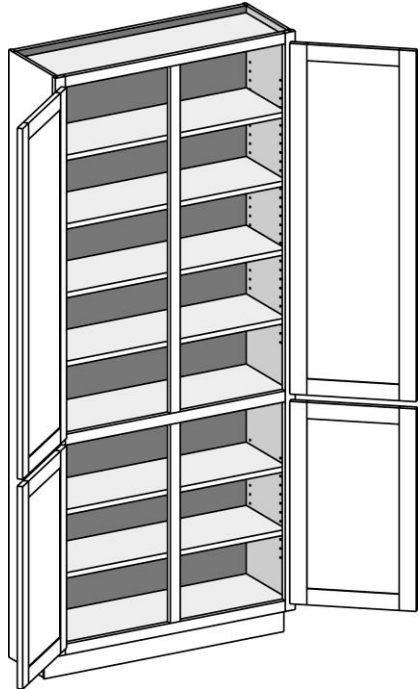
UCR1596

UCR1896

UCR2196

UCR2496

ility Cabinet Reverse



AVAILABLE OPTIONS

EXTEND STILE	EXPOSED END	FLUSH END	MATCHING INTERIOR
✓	✓	✓	✓
SHAPED TOP RAIL	FLUSH TOE	FLUSH TOE WITH ARCH	
	✓	✓	

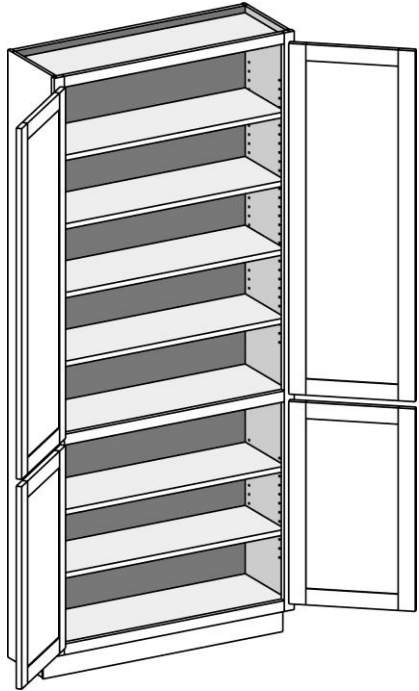
Cabinet Code

Cabinet Information and Notes

UCR2784
UCR3084
UCR3384
UCR3684
UCR2790
UCR3090
UCR3390
UCR3690
UCR2796
UCR3096
UCR3396
UCR3696

- 12-1/2" Deep
- 84" and 90" have six shelves
- 96" units have a separate 4" toe platform and have seven shelves
- Lower section aligns with 34-1/2" base cabinet

Utility Cabinet Reverse w/Butt Doors



AVAILABLE OPTIONS

EXTEND STILE	EXPOSED END	FLUSH END	MATCHING INTERIOR
✓	✓	✓	✓
SHAPED TOP RAIL	FLUSH TOE	FLUSH TOE WITH ARCH	
✓	✓	✓	

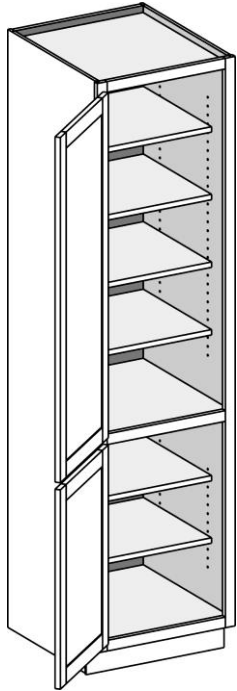
Cabinet Code

Cabinet Information and Notes

- UCR2484BD
- UCR2784BD
- UCR3084BD
- UCR3384BD
- UCR3684BD
- UCR2490BD
- UCR2790BD
- UCR3090BD
- UCR3390BD
- UCR3690BD
- UCR2496BD
- UCR2796BD
- UCR3096BD
- UCR3396BD
- UCR3696BD

- 12-1/2" Deep
- 84" and 90" have six shelves
- 96" units have a separate 4" toe platform and have seven shelves
- Lower section aligns with 34-1/2" base cabinet

Utility Cabinet Deep Reverse



AVAILABLE OPTIONS

EXTEND STILE	EXPOSED END	FLUSH END	MATCHING INTERIOR
✓	✓	✓	✓
SHAPED TOP RAIL	FLUSH TOE	FLUSH TOE WITH ARCH	
✓	✓	✓	

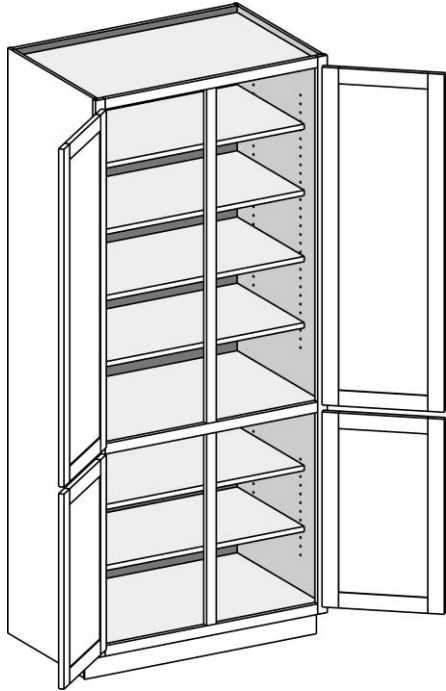
Cabinet Code

Cabinet Information and Notes

UCDR1584
UCDR1884
UCDR2184
UCDR2484
UCDR1590
UCDR1890
UCDR2190
UCDR2490
UCDR1596
UCDR1896
UCDR2196
UCDR2496

- 24" Deep
- 84" and 90" have six shelves
- 96" units have a separate 4" toe platform and have seven shelves
- Lower section aligns with 34-1/2" base cabinet

Utility Cabinet Deep Reverse



AVAILABLE OPTIONS

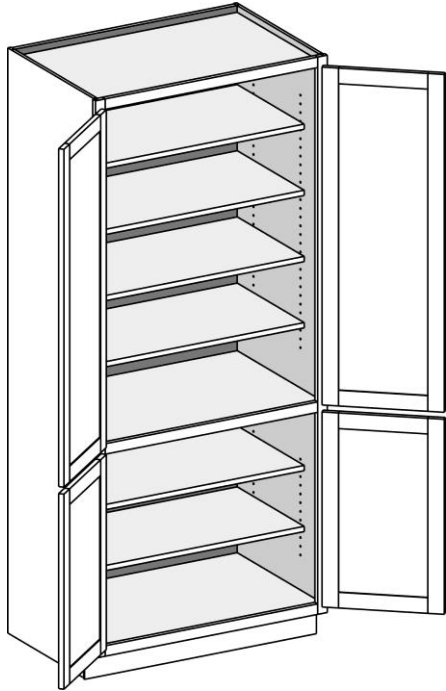
EXTEND STILE	EXPOSED END	FLUSH END	MATCHING INTERIOR
✓	✓	✓	✓
SHAPED TOP RAIL	FLUSH TOE	FLUSH TOE WITH ARCH	
	✓	✓	

Cabinet Code

Cabinet Information and Notes

UCDR2784	• 24" Deep
UCDR3084	• 84" and 90" have six shelves
UCDR3384	• 96" units have a separate 4" toe platform and have seven shelves
UCDR3684	• Lower section aligns with 34-1/2" base cabinet
UCDR2790	
UCDR3090	
UCDR3390	
UCDR3690	
UCDR2796	
UCDR3096	
UCDR3396	
UCDR3696	

Utility Cabinet Deep Reverse w/Butt Doors



AVAILABLE OPTIONS

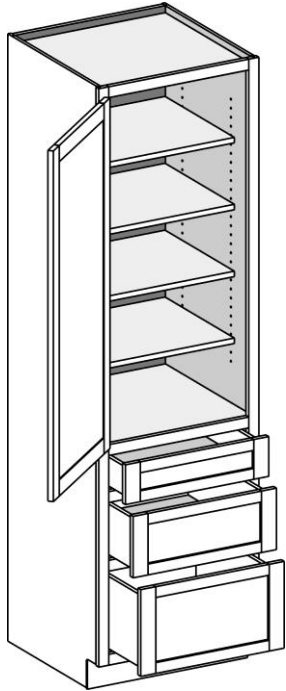
EXTEND STILE	EXPOSED END	FLUSH END	MATCHING INTERIOR
✓	✓	✓	✓
SHAPED TOP RAIL	FLUSH TOE	FLUSH TOE WITH ARCH	
✓	✓	✓	

Cabinet Code

Cabinet Information and Notes

UCDR2484BD	<ul style="list-style-type: none"> • 24" Deep • 84" and 90" have six shelves • 96" units have a separate 4" toe platform and have seven shelves • Lower section aligns with 34-1/2" base cabinet
UCDR2784BD	
UCDR3084BD	
UCDR3384BD	
UCDR3684BD	
UCDR2490BD	
UCDR2790BD	
UCDR3090BD	
UCDR3390BD	
UCDR3690BD	
UCDR2496BD	
UCDR2796BD	
UCDR3096BD	
UCDR3396BD	
UCDR3696BD	

Utility Three Drawer



AVAILABLE OPTIONS

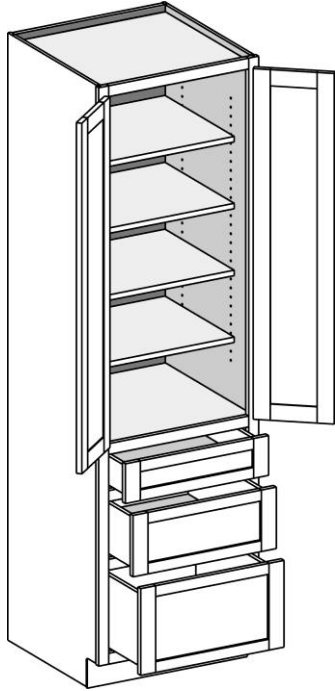
EXTEND STILE	EXPOSED END	FLUSH END	MATCHING INTERIOR
✓	✓	✓	✓
SHAPED TOP RAIL	FLUSH TOE	FLUSH TOE WITH ARCH	
✓	✓	✓	

Cabinet Code

Cabinet Information and Notes

U3D1884	<ul style="list-style-type: none"> • 24" Deep • 96" units have a separate 4" toe platform and have seven shelves • Lower section aligns with 34-1/2" base cabinet
U3D2184	
U3D2484	
U3D1890	
U3D2190	
U3D2490	
U3D1896	
U3D2196	
U3D2496	

Utility Three Drawer w/Butt Doors



AVAILABLE OPTIONS

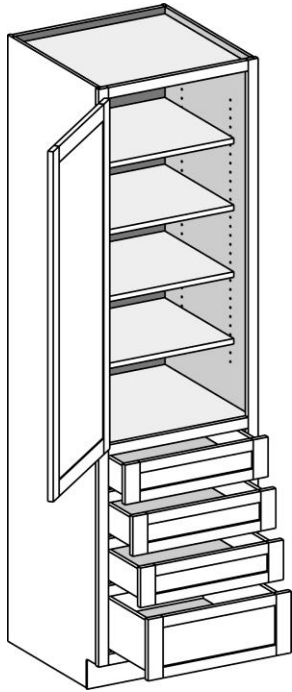
EXTEND STILE	EXPOSED END	FLUSH END	MATCHING INTERIOR
✓	✓	✓	✓
SHAPED TOP RAIL	FLUSH TOE	FLUSH TOE WITH ARCH	
✓	✓	✓	

Cabinet Code

Cabinet Information and Notes

U3D2484BD	• 24" Deep
U3D2490BD	• 96" units have a separate 4" toe platform and have seven shelves
U3D2496BD	• Lower section aligns with 34-1/2" base cabinet

Utility Four Drawer



AVAILABLE OPTIONS

EXTEND STILE	EXPOSED END	FLUSH END	MATCHING INTERIOR
✓	✓	✓	✓
SHAPED TOP RAIL	FLUSH TOE	FLUSH TOE WITH ARCH	
✓	✓	✓	

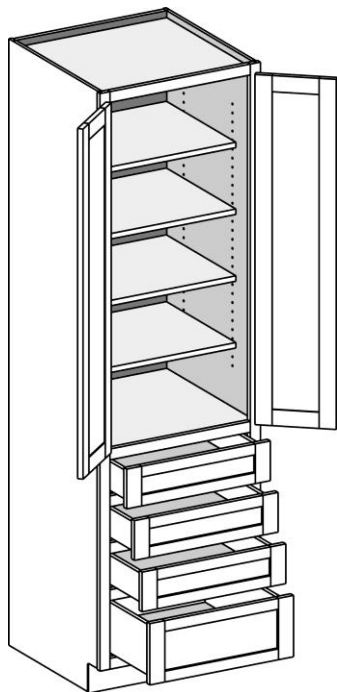
Cabinet Code

Cabinet Information and Notes

U4D1884
 U4D2184
 U4D2484
 U4D1890
 U4D2190
 U4D2490
 U4D1896
 U4D2196
 U4D2496

- 24" Deep
- 96" units have a separate 4" toe platform and have seven shelves
- Lower section aligns with 34-1/2" base cabinet

Utility Four Drawer w/Butt Doors



AVAILABLE OPTIONS

EXTEND STILE	EXPOSED END	FLUSH END	MATCHING INTERIOR
✓	✓	✓	✓
SHAPED TOP RAIL	FLUSH TOE	FLUSH TOE WITH ARCH	
✓	✓	✓	

Cabinet Code

Cabinet Information and Notes

U4D2484BD

- 24" Deep

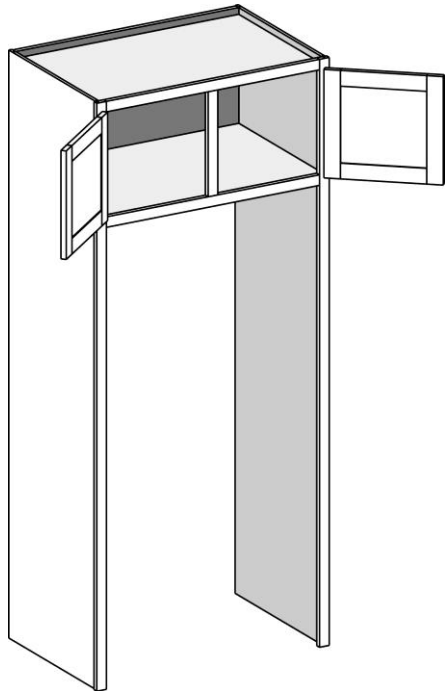
U4D2490BD

- 96" units have a separate 4" toe platform and have seven shelves

U4D2496BD

- Lower section aligns with 34-1/2" base cabinet

Refrigerator Tall Both



AVAILABLE OPTIONS

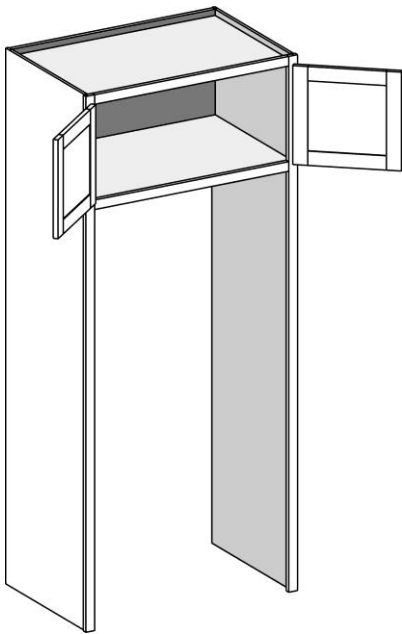
EXTEND STILE	EXPOSED END	FLUSH END	MATCHING INTERIOR
✓	✓	✓	✓
SHAPED TOP RAIL	FLUSH TOE	FLUSH TOE WITH ARCH	

Cabinet Code

Cabinet Information and Notes

RTB331284	<ul style="list-style-type: none"> • 24" Deep • Middle number in cabinet code refers to the height of the wall cabinet • Pioneer (particleboard) refrigerator tall cabinets use Craftsman (plywood) sides • Sides on 96" unit are a full 96" high. Be cautious of your ceiling height as this cabinet will not 'tip up' in an 8' ceiling application • IMPORTANT NOTE: The fridge opening on this cabinet is 3" LESS THAN the overall cabinet width. The side panels measure 1-1/2" each and are part of the overall width dimension. IE: An RTB39 will only fit a 36" fridge. • 21" and 24" high cabinets have one shelf • 27" high wall cabinet has two shelves • Available with 27" deep cabinet sides (inside of upper cabinet is still 24")
RTB331584	
RTB331884	
RTB361284	
RTB361584	
RTB361884	
RTB391284	
RTB391584	
RTB391884	
RTB331890	
RTB332190	
RTB332490	
RTB361890	
RTB362190	
RTB362490	
RTB391890	
RTB392190	
RTB392490	
RTB332496	
RTB332796	
RTB362496	
RTB362796	
RTB392496	
RTB392796	

Refrigerator Tall Both w / Butt Doors

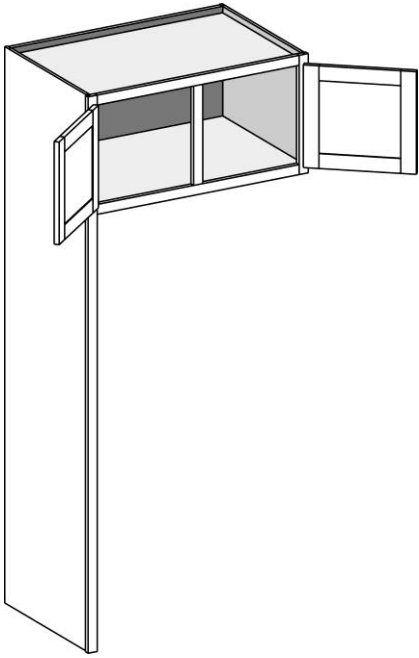


AVAILABLE OPTIONS

EXTEND STILE	EXPOSED END	FLUSH END	MATCHING INTERIOR
✓	✓	✓	✓
SHAPED TOP RAIL	FLUSH TOE	FLUSH TOE WITH ARCH	
✓			

Cabinet Code	Cabinet Information and Notes
RTB331284BD	<ul style="list-style-type: none"> • 24" Deep • Middle number in cabinet code refers to the height of the wall cabinet • Pioneer (particleboard) refrigerator tall cabinets use Craftsman (plywood) sides • Sides on 96" unit are a full 96" high. Be cautious of your ceiling height as this cabinet will not 'tip up' in an 8' ceiling application • IMPORTANT NOTE: The fridge opening on this cabinet is 3" LESS THAN the overall cabinet width. The side panels measure 1-1/2" each and are part of the overall width dimension. IE: An RTB39 will only fit a 36" fridge. • 21" and 24" high cabinets have one shelf • 27" high wall cabinet has two shelves • Available with 27" deep cabinet sides (inside of upper cabinet is still 24")
RTB331584BD	
RTB331884BD	
RTB361284BD	
RTB361584BD	
RTB361884BD	
RTB331890BD	
RTB332190BD	
RTB332490BD	
RTB361890BD	
RTB362190BD	
RTB362490BD	
RTB332496BD	
RTB332796BD	
RTB362496BD	
RTB362796BD	

Refrigerator Tall Left

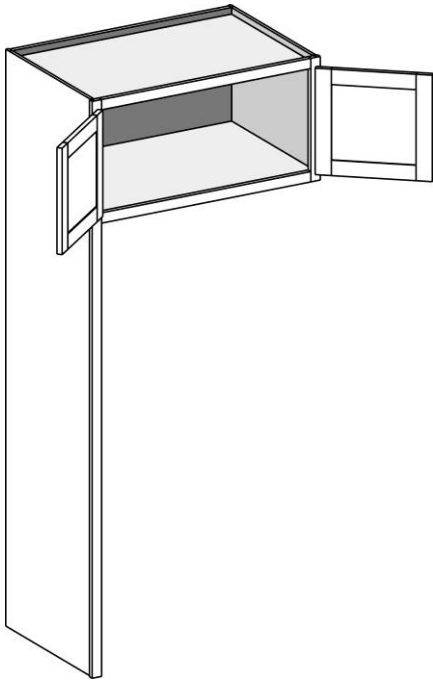


AVAILABLE OPTIONS

EXTEND STILE	EXPOSED END	FLUSH END	MATCHING INTERIOR
✓	✓	✓	✓
SHAPED TOP RAIL	FLUSH TOE	FLUSH TOE WITH ARCH	

Cabinet Code	Cabinet Information and Notes
RTL331284	<ul style="list-style-type: none"> • 24" Deep • Middle number in cabinet code refers to the height of the wall cabinet • Pioneer (particleboard) refrigerator tall cabinets use Craftsman (plywood) sides • Sides on 96" unit are a full 96" high. Be cautious of your ceiling height as this cabinet will not 'tip up' in an 8' ceiling application • IMPORTANT NOTE: The fridge opening on this cabinet is 1-1/2" LESS THAN the overall cabinet width. The side panel measures 1-1/2" and is part of the overall width dimension. • 21" and 24" high cabinets have one shelf • 27" high wall cabinet has two shelves • Available with 27" deep cabinet sides (inside of upper cabinet is still 24")
RTL331584	
RTL331884	
RTL361284	
RTL361584	
RTL361884	
RTL391284	
RTL391584	
RTL391884	
RTL331890	
RTL332190	
RTL332490	
RTL361890	
RTL362190	
RTL362490	
RTL391890	
RTL392190	
RTL392490	
RTL332496	
RTL332796	
RTL362496	
RTL362796	
RTL392496	
RTL392796	

Refrigerator Tall Left W / Butt Doors

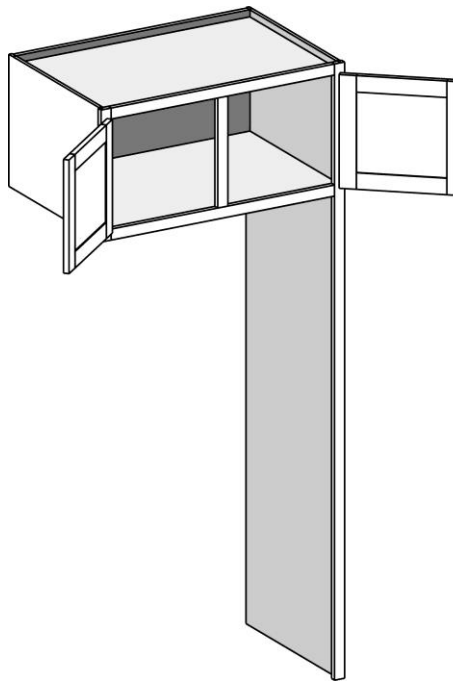


AVAILABLE OPTIONS

EXTEND STILE	EXPOSED END	FLUSH END	MATCHING INTERIOR
✓	✓	✓	✓
SHAPED TOP RAIL	FLUSH TOE	FLUSH TOE WITH ARCH	
✓			

Cabinet Code	Cabinet Information and Notes
RTL331284BD	<ul style="list-style-type: none"> • 24" Deep • Middle number in cabinet code refers to the height of the wall cabinet • Pioneer (particleboard) refrigerator tall cabinets use Craftsman (plywood) sides • Sides on 96" unit are a full 96" high. Be cautious of your ceiling height as this cabinet will not 'tip up' in an 8' ceiling application • IMPORTANT NOTE: The fridge opening on this cabinet is 1-1/2" LESS THAN the overall cabinet width. The side panel measures 1-1/2" and is part of the overall width dimension. • 21" and 24" high cabinets have one shelf • 27" high wall cabinet has two shelves • Available with 27" deep cabinet sides (inside of upper cabinet is still 24")
RTL331584BD	
RTL331884BD	
RTL361284BD	
RTL361584BD	
RTL361884BD	
RTL331890BD	
RTL332190BD	
RTL332490BD	
RTL361890BD	
RTL362190BD	
RTL362490BD	
RTL332496BD	
RTL332796BD	
RTL362496BD	
RTL362796BD	

Refrigerator Tall Right

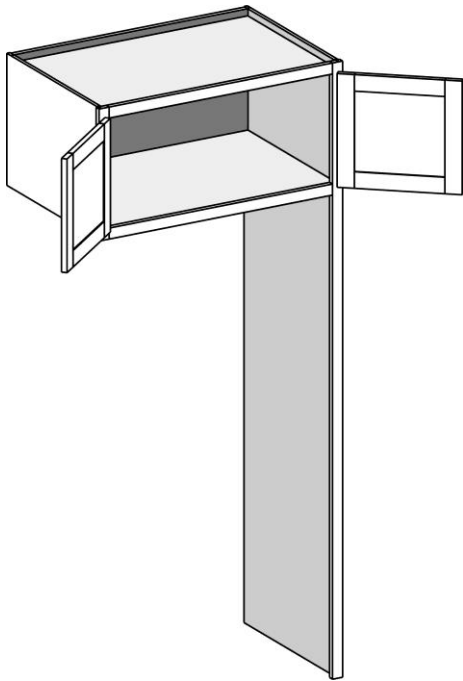


AVAILABLE OPTIONS

EXTEND STILE	EXPOSED END	FLUSH END	MATCHING INTERIOR
✓	✓	✓	✓
SHAPED TOP RAIL	FLUSH TOE	FLUSH TOE WITH ARCH	

Cabinet Code	Cabinet Information and Notes
RTR331284	<ul style="list-style-type: none"> • 24" Deep • Middle number in cabinet code refers to the height of the wall cabinet • Pioneer (particleboard) refrigerator tall cabinets use Craftsman (plywood) sides • Sides on 96" unit are a full 96" high. Be cautious of your ceiling height as this cabinet will not 'tip up' in an 8' ceiling application • IMPORTANT NOTE: The fridge opening on this cabinet is 1-1/2" LESS THAN the overall cabinet width. The side panel measures 1-1/2" and is part of the overall width dimension. • 21" and 24" high cabinets have one shelf • 27" high wall cabinet has two shelves • Available with 27" deep cabinet sides (inside of upper cabinet is still 24")
RTR331584	
RTR331884	
RTR361284	
RTR361584	
RTR361884	
RTR391284	
RTR391584	
RTR391884	
RTR331890	
RTR332190	
RTR332490	
RTR361890	
RTR362190	
RTR362490	
RTR391890	
RTR392190	
RTR392490	
RTR332496	
RTR332796	
RTR362496	
RTR362796	
RTR392496	
RTR392796	

Refrigerator Tall Right W / Butt Doors

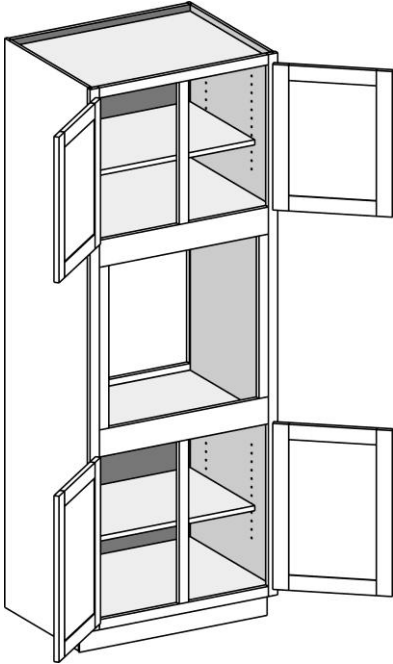


AVAILABLE OPTIONS

EXTEND STILE	EXPOSED END	FLUSH END	MATCHING INTERIOR
✓	✓	✓	✓
SHAPED TOP RAIL	FLUSH TOE	FLUSH TOE WITH ARCH	
✓			

Cabinet Code	Cabinet Information and Notes
RTR331284BD	<ul style="list-style-type: none"> • 24" Deep • Middle number in cabinet code refers to the height of the wall cabinet • Pioneer (particleboard) refrigerator tall cabinets use Craftsman (plywood) sides • Sides on 96" unit are a full 96" high. Be cautious of your ceiling height as this cabinet will not 'tip up' in an 8' ceiling application • IMPORTANT NOTE: The fridge opening on this cabinet is 1-1/2" LESS THAN the overall cabinet width. The side panel measures 1-1/2" and is part of the overall width dimension. • 21" and 24" high cabinets have one shelf • 27" high wall cabinet has two shelves • Available with 27" deep cabinet sides (inside of upper cabinet is still 24")
RTR331584BD	
RTR331884BD	
RTR361284BD	
RTR361584BD	
RTR361884BD	
RTR331890BD	
RTR332190BD	
RTR332490BD	
RTR361890BD	
RTR362190BD	
RTR362490BD	
RTR332496BD	
RTR332796BD	
RTR362496BD	
RTR362796BD	

Oven Single Opening



AVAILABLE OPTIONS

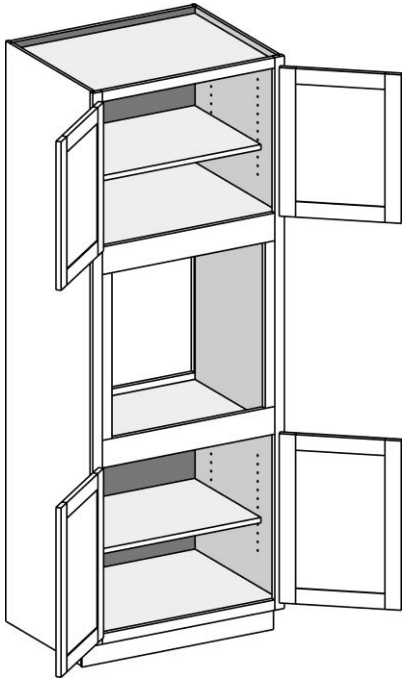
EXTEND STILE	EXPOSED END	FLUSH END	MATCHING INTERIOR
✓	✓	✓	✓
SHAPED TOP RAIL	FLUSH TOE	FLUSH TOE WITH ARCH	
	✓	✓	

Cabinet Code

Cabinet Information and Notes

OS2784	<ul style="list-style-type: none"> • 24" Deep • 84" Has two shelves • 90" and 96" has three shelves • 96" units have separate toe platform • Oven opening is 24" high, width is 6" less than cabinet width • Oven opening is trimmable 3" in width and 5" in height • Oven opening is 33-1/2" off the floor, trimmable to 31" • Available with 27" deep cabinet sides (inside of cabinet is still 24")
OS3084	
OS3384	
OS2790	
OS3090	
OS3390	
OS2796	
OS3096	
OS3396	

Oven Single Opening w / Butt Doors



AVAILABLE OPTIONS

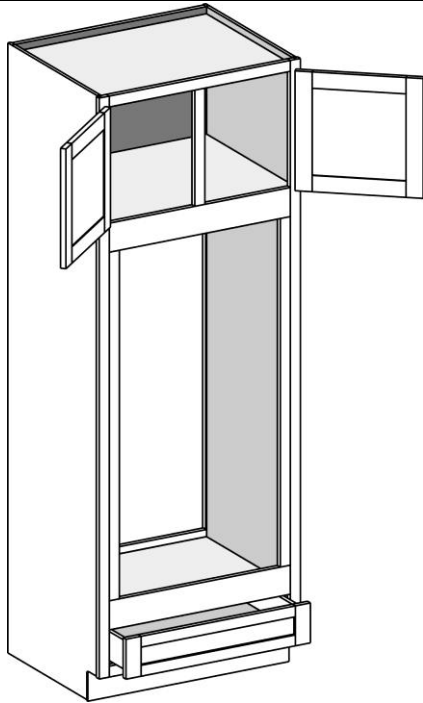
EXTEND STILE	EXPOSED END	FLUSH END	MATCHING INTERIOR
✓	✓	✓	✓
SHAPED TOP RAIL	FLUSH TOE	FLUSH TOE WITH ARCH	
✓	✓	✓	

Cabinet Code

Cabinet Information and Notes

OS2784BD	<ul style="list-style-type: none"> • 24" Deep • 84" Has two shelves • 90" and 96" has three shelves • 96" units have separate toe platform • Oven opening is 24" high, width is 6" less than cabinet width • Oven opening is trimmable 3" in width and 5" in height • Oven opening is 33-1/2" off the floor, trimmable to 31" • Available with 27" deep cabinet sides (inside of cabinet is still 24")
OS3084BD	
OS3384BD	
OS2790BD	
OS3090BD	
OS3390BD	
OS2796BD	
OS3096BD	
OS3396BD	

Oven Double Opening Type A w/ 1 Drawer



AVAILABLE OPTIONS

EXTEND STILE	EXPOSED END	FLUSH END	MATCHING INTERIOR
✓	✓	✓	✓
SHAPED TOP RAIL	FLUSH TOE	FLUSH TOE WITH ARCH	
	✓	✓	

Cabinet Code

Cabinet Information and Notes

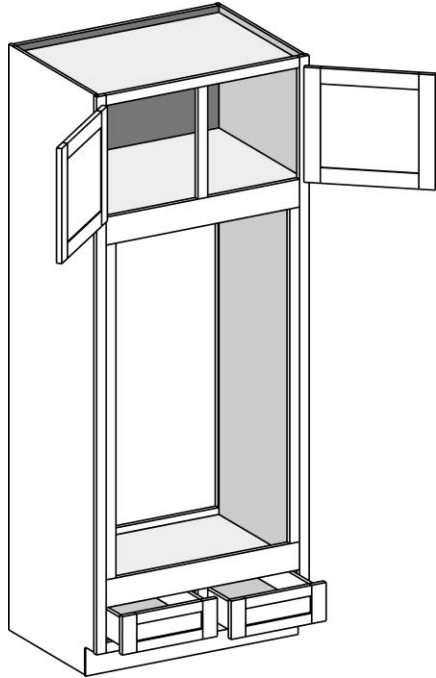
ODA2784

ODA2790

ODA2796

- 24" Deep
- 84" has no shelves
- 90" has one shelf
- 96" has two shelves
- 96" units have separate toe platform
- Oven opening is 48" high, width is 6" less than cabinet width
- Oven opening is trimmable 3" in width and 5" in height
- Oven opening is 14-1/2" off the floor, trimmable to 12"
- Available with 27" deep cabinet sides (inside of cabinet is still 24")

Oven Double Opening Type A w/ 2 Drawers



AVAILABLE OPTIONS

EXT	EXP	FL	MI	STR	FT	FTRA
✓	✓	✓	✓		✓	✓

Cabinet Code

Cabinet Information and Notes

ODA3084

- 24" Deep

ODA3384

- 84" has no shelves

ODA3090

- 90" has one shelf

ODA3390

- 96" has two shelves

ODA3096

- 96" units have separate toe platform

ODA3096

- Oven opening is 48" high, width is 6" less than cabinet width

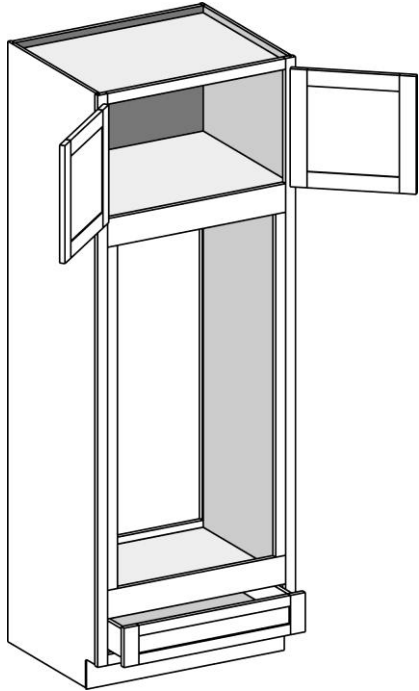
ODA3396

- Oven opening is trimmable 3" in width and 5" in height

- Oven opening is 14-1/2" off the floor, trimmable to 12"

- Available with 27" deep cabinet sides (inside of cabinet is still 24")

Oven Double Opening Type A w/ Butt Doors



AVAILABLE OPTIONS

EXTEND STILE	EXPOSED END	FLUSH END	MATCHING INTERIOR
✓	✓	✓	✓
SHAPED TOP RAIL	FLUSH TOE	FLUSH TOE WITH ARCH	
✓	✓	✓	

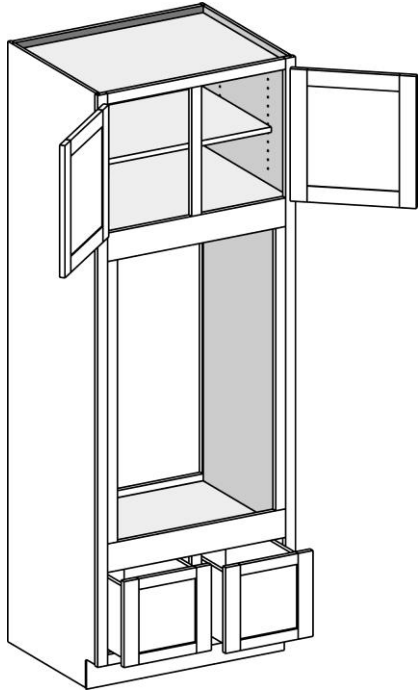
Cabinet Code

Cabinet Information and Notes

ODA2784BD
ODA3084BD
ODA3384BD
ODA2790BD
ODA3090BD
ODA3390BD
ODA2796BD
ODA3096BD
ODA3396BD

- 24" Deep
- 84" has no shelves
- 90" has one shelf
- 96" has two shelves
- 96" units have separate toe platform
- Oven opening is 48" high, width is 6" less than cabinet width
- Oven opening is trimmable 3" in width and 5" in height
- Oven opening is 14-1/2" off the floor, trimmable to 12"
- Available with 27" deep cabinet sides (inside of cabinet is still 24")

Oven Double Opening Type B



AVAILABLE OPTIONS

EXTEND STILE	EXPOSED END	FLUSH END	MATCHING INTERIOR
✓	✓	✓	✓
SHAPED TOP RAIL	FLUSH TOE	FLUSH TOE WITH ARCH	
	✓	✓	

Cabinet Code

Cabinet Information and Notes

ODB3084

- 24" Deep

ODB3384

- 84" has one shelf

ODB3090

- 90" and 96" have two shelves

ODB3390

- 96" units have separate toe platform

ODB3096

- Oven opening is 39-1/2" high, width is 6" less than cabinet width

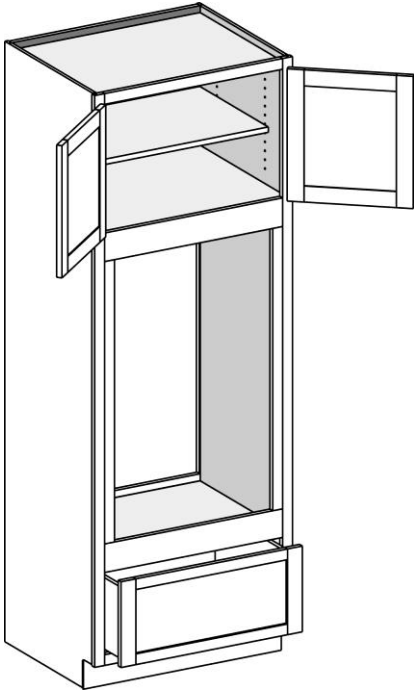
ODB3396

- Oven opening is trimmable 3" in width and 5" in height

- Oven opening is 21" off the floor, trimmable to 18-1/2"

- Available with 27" deep cabinet sides (inside of cabinet is still 24")

Oven Double Opening Type B w / Butt Doors



AVAILABLE OPTIONS

EXTEND STILE	EXPOSED END	FLUSH END	MATCHING INTERIOR
✓	✓	✓	✓
SHAPED TOP RAIL	FLUSH TOE	FLUSH TOE WITH ARCH	
✓	✓	✓	

Cabinet Code

Cabinet Information and Notes

ODB3084BD
 ODB3384BD
 ODB3090BD
 ODB3390BD
 ODB3096BD
 ODB3396BD

- 24" Deep
- 84" has one shelf
- 90" and 96" have two shelves
- 96" units have separate toe platform
- Oven opening is 39-1/2" high, width is 6" less than cabinet width
- Oven opening is trimmable 3" in width and 5" in height
- Oven opening is 21" off the floor, trimmable to 18-1/2"
- Available with 27" deep cabinet sides (inside of cabinet is still 24")