

## What is 'Overlay'?

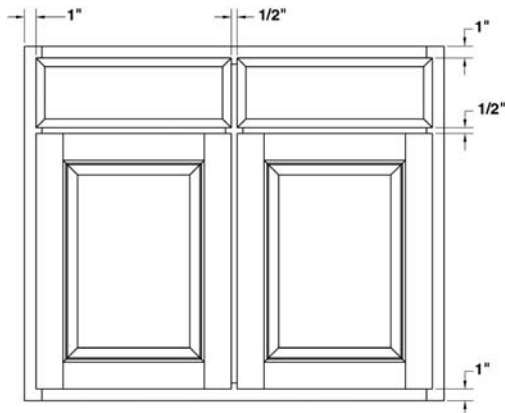
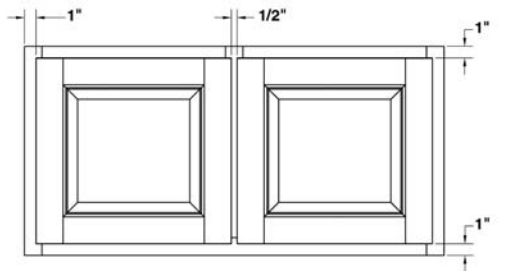
One of the most common terms we get asked about is the term overlay. A word used to describe how far over the opening of a cabinet the doors lay. The best way to describe it is by illustrating the term. The pictures on page 2 assume that the face frame (the wood frame that surrounds the cabinet face which the doors are mounted to) uses 1-1/2" wide material. You'll notice that in the 1/2" overlay diagram, the 'reveal' (the amount of cabinet showing around the doors) is quite large at 1". The door is laying over the face frame by 1/2" (1-1/2" framing material - 1/2" overlay = 1" reveal). The result is a lot of cabinet showing around the door. The image on the right shows a 1-1/4" overlay. In this case, the reveal is only 1/4" (1-1/2" framing - 1-1/4" overlay = 1/4" reveal). The result here is that the doors cover the majority of the cabinet face.

While there is not a right or wrong overlay to pick, it is imperative that you choose a common overlay such as 1/4", 1/2", 1-1/4" or 1-3/8" as the hinges only come in standard overlays. Also remember that your face frame width plays in to the overall look you will achieve with your new doors. For instance, while 1-1/2" face frame material is fairly standard, it is not uncommon to have wider or narrower face frame material. Let's assume your face frame material is 2" wide. Even at the widest overlay of 1-3/8", you will still have a fairly large 5/8" reveal around your doors.

Also consider how cabinet doors will 'share' a piece of face frame material. As an example, let's assume you have a 48" wall cabinet with two openings and 2 doors covering each opening and you want 1-1/4" overlay on this cabinet. The two middle doors on this cabinet will need to share the middle upright face frame piece. Assuming that piece is 1-1/2" wide, you would need to have a 1/2" overlay on that hinge side where these two doors meet. The outer doors would be able to accommodate the full 1-1/4" overlay as they are not sharing the outside rails with any other door.

The main thing is, plan your door sizes carefully as failure to do so could cause your doors to fit poorly or conflict with one another, causing costly replacements. Please bear in mind that we do not take door orders based on 'cabinet opening sizes', only actual door sizes and that, while we are here to assist you by answering overlay application questions, the final responsibility for your doors fitting your cabinets is yours as we are not at the job site to engineer the fit of your doors!

**1/2" Overlay**



**1-1/4" Overlay**

