



## Moulding Program

Conestoga offers several different moulding programs for your convenience.

Program Selection	Species	Grade	Minimum Order Quantity	Maximum Order Quantity	Lead Time, Days
8 ft. Standard Profiles	Stock	Choice	1 piece	25 pieces*	3
	Non-stock	Choice	1 piece	None	7-10
8 ft. Non-standard and Special Order Profiles	Any	Choice	1 piece**	None	7-10
Random Length Cabinet Framing/S4S	Any	Prime	100 ft.	None	7-10
Radius	Any	Choice	1 piece	None	10

\*Maximum stock order per specific profile and specie is 25 pieces. Orders exceeding 25 pieces require 7-10 days lead time.

\*\*Non-standard profile orders of less than 100 lineal feet will incur a set-up charge.

## Solid Wood Moulding Specifications

- Eight foot standard and non-standard pieces will be shipped 94" to 97" in length.
- Natural specie characteristics that exhibit the character and beauty of wood will be evident on mouldings. These characteristics will include, but not be limited to, color variations, heartwood, sapwood, knots, worm holes and surface and end checks. Conestoga specifications do not allow these characteristics to affect structural integrity of the mouldings.
- Natural characteristics that become evident through machining, environmental or atmospheric conditions such as minor bows, twists and crooks, may be evident but will not affect product quality or impede workability. Machining marks may be evident, but will not affect structural integrity. Moulding profiles 3-1/2" or larger may have at least one glue joint running the length of the piece.
- Solid wood mouldings are available in two grades, "prime" and "choice", as defined below. Mouldings are classified differently than our door/drawer front wood grading of Premium, Standard or Value grade. Moulding grades refer to the usability of the lumber.
  - ❖ **Choice** – All 8 ft. moulding programs utilize choice grade material. Each piece will exhibit similar material quality characteristics on the face of the moulding that we offer on our standard grade doors. Ends will be trimmed. Depending on profile depth and specie ordered, sap or heartwood may appear on the moulding face. This is our highest grade for mouldings.
  - ❖ **Prime** – Random length cabinet framing utilizes prime grade material. These pieces may contain a limited amount of defects and color variation admitted in the established rules of the National Hardwood Lumber Association for this grade. 8 ft. lengths of material will be approximately 80% defect free. Pieces under 8 ft. will be approximately 90% defect free. Defect locations will vary.

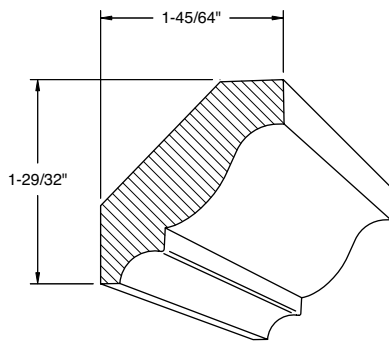




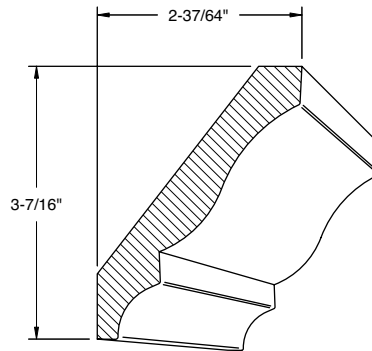




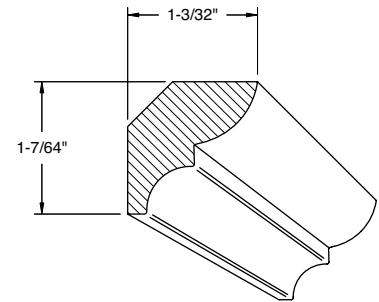
## Crown Mouldings



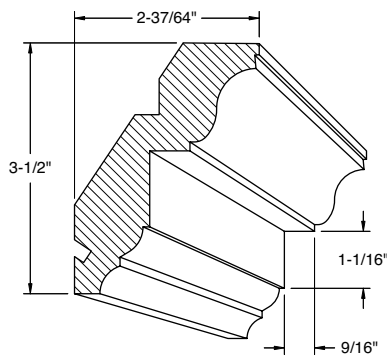
**Crown 6**



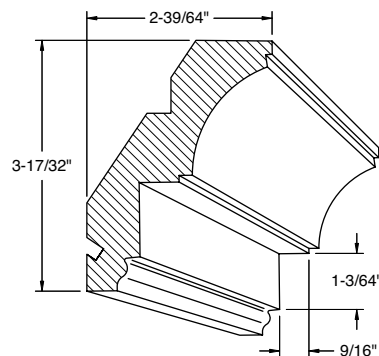
**Crown 24**



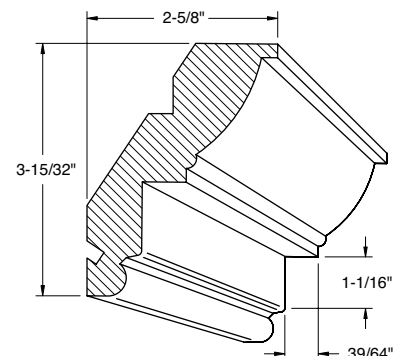
**Crown 33**



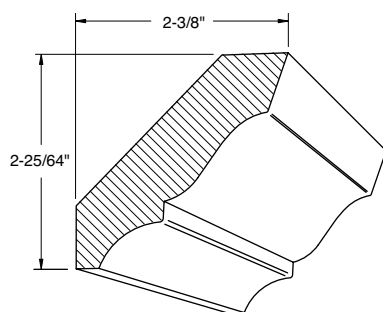
**Crown 342\***



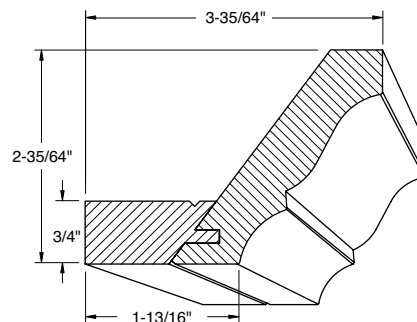
**Crown 343\***



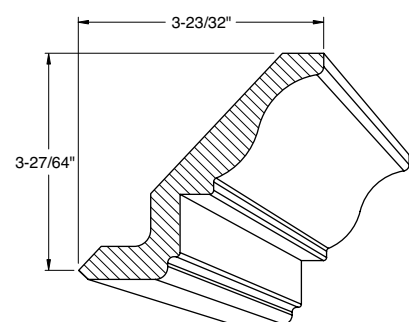
**Crown 344\***



**Crown 619**



**Crown 801†  
with Heel**



**Crown B10  
True32**

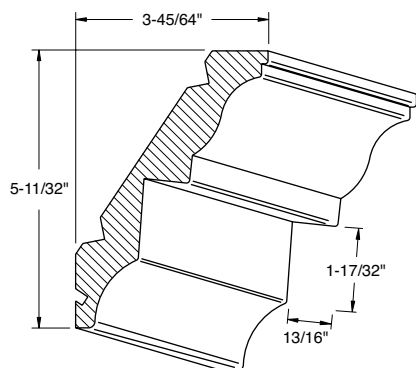
\* Crown mouldings 342, 343, 344 will accommodate mounting plate 384 and 3/4" Rope, 7/8" Dentil and 1" Egg & Dart.

† Crown 801 will be manufactured with a Paint Grade heel, additional species are available through Special Designs.

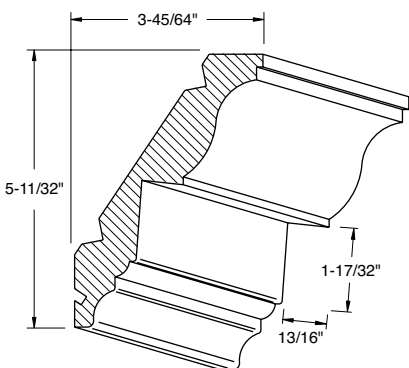
Note: Drawings not to scale.



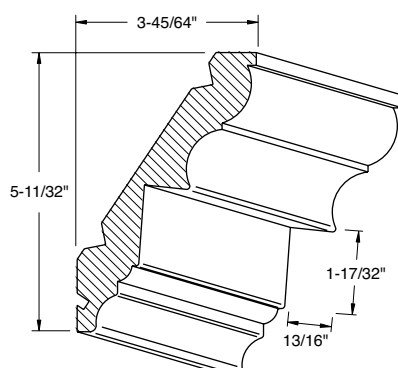
## Crown Mouldings (continued)



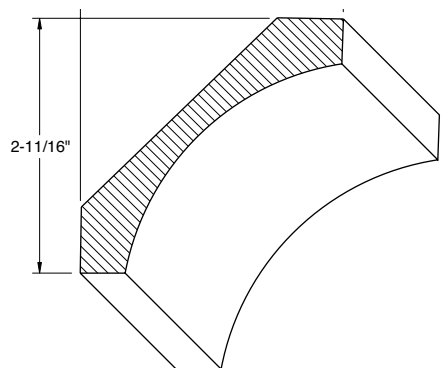
**Crown 1621\***



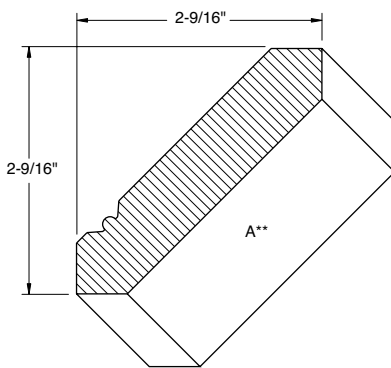
**Crown 1622\***



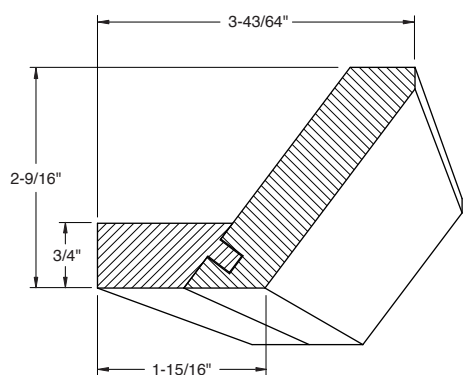
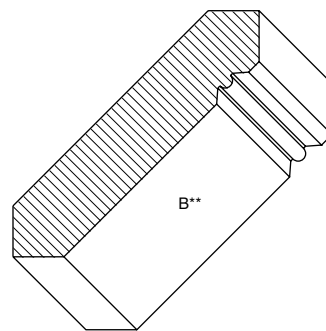
**Crown 1623\***



**Large Cove 1524**



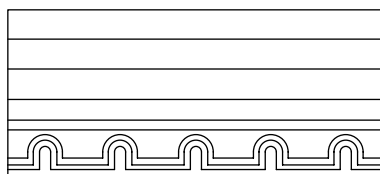
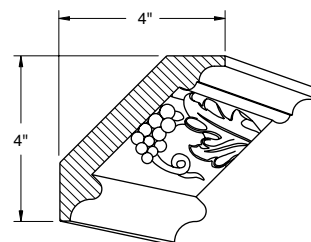
**Reverse Shaker  
Crown 1529\*\***



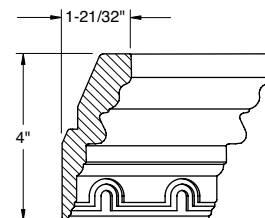
**Shaker Crown 1126†  
with Heel**



**Grape Crown 4GRA**



**Arch Crown 4ARC**



\* Crown mouldings 1621, 1622, 1623 will accommodate Mounting Plate 384 and 1-1/2" Rope, Dentil and Egg & Dart.

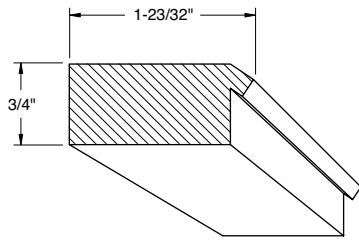
\*\* When ordering dual side profile product, specify "Face side A" or "Face side B". When ordering pre-finished product, specify "Finish side A" or "Finish side B."

† Shaker Crown 1126 will be manufactured with a Paint Grade heel, additional species are available through Special Designs.

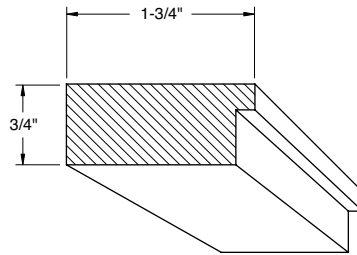
Note: Drawings not to scale.



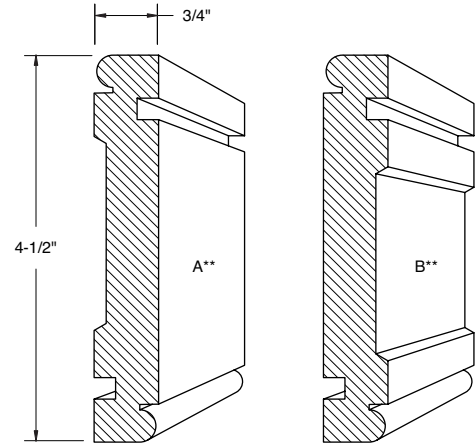
## Trim and Accent Mouldings



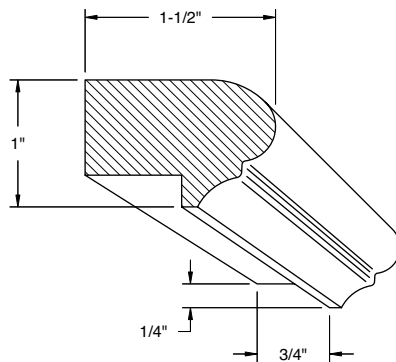
**Crown Mounting  
Plate 384**



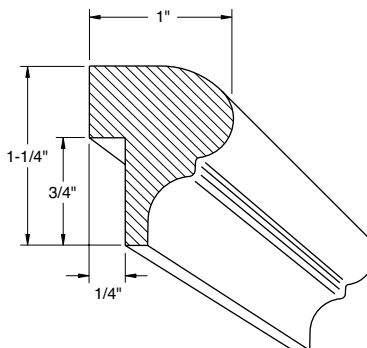
**Frieze Mounting Plate 470**



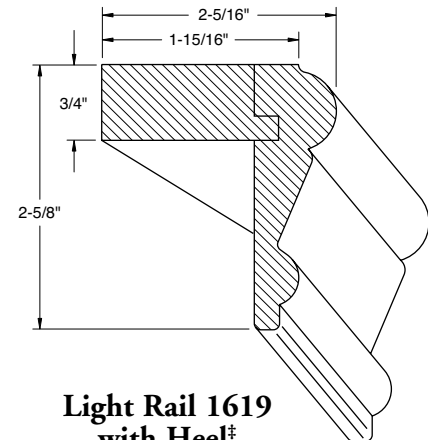
**Reversible Frieze 345\***



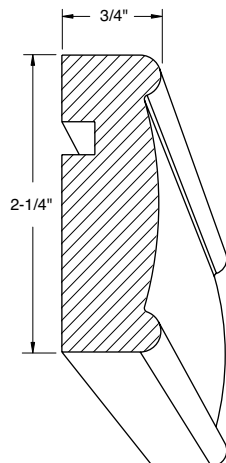
**Light Rail B11**



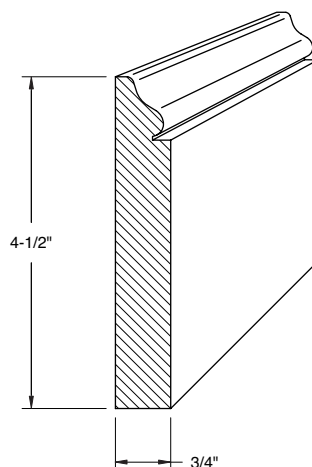
**Light Rail 361**



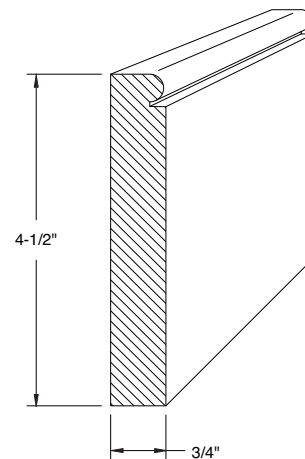
**Light Rail 1619  
with Heel†  
‡True32‡**



**Light Rail 1448†**



**Colonial Base 10**



**Beaded Base 381**

\* Reversible Frieze 345 will accommodate Mounting Plate 470.

\*\* When ordering dual side profile product, specify "Face side A" or "Face side B". When ordering pre-finished product, specify "Finish side A" or "Finish side B."

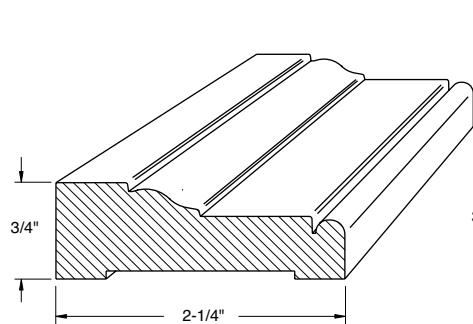
† Light Rail 1448 will accommodate Mounting Plate 470.

‡ Light Rail 1619 will be manufactured with a Paint Grade heel, additional species are available through Special Designs.

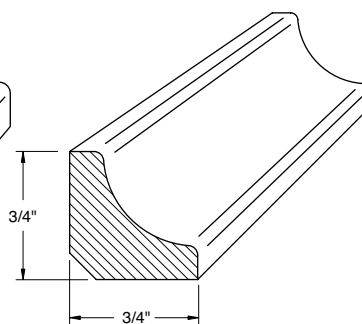
Note: Drawings not to scale.



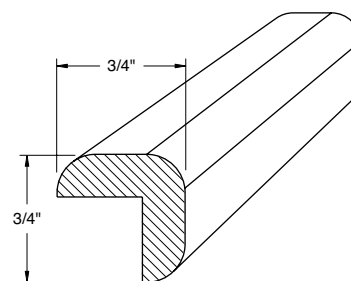
## Trim and Accent Mouldings (continued)



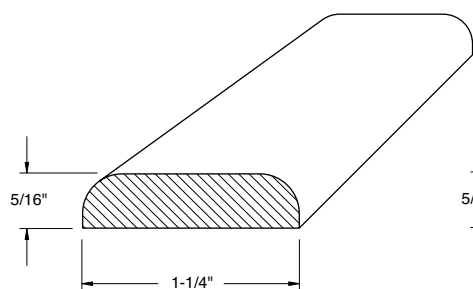
**Colonial Casing 21**



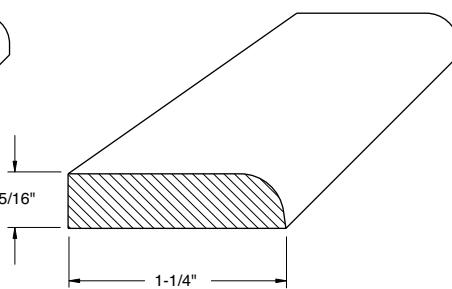
**Inside Corner  
Cove 11**



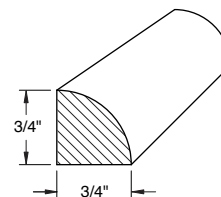
**Outside Corner 12**



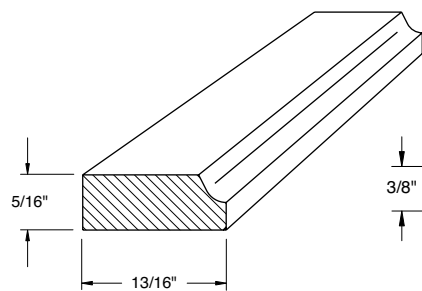
**Batten 13**



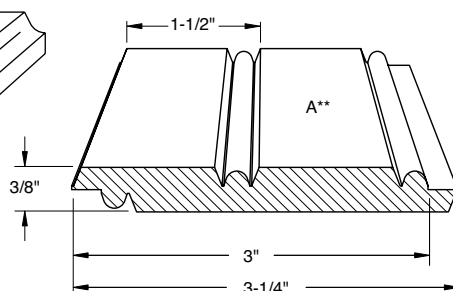
**Scribe 14**



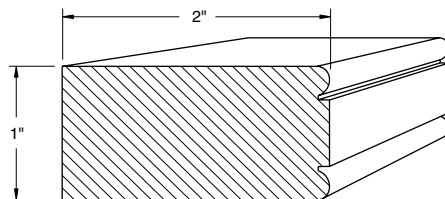
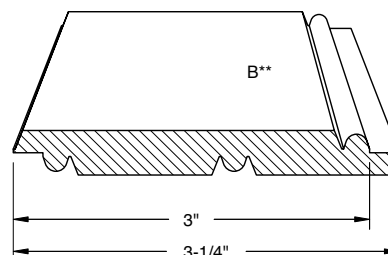
**Quarter Round  
1329**



**Scribe 1809**



**Beaded Panel B09\*\***



**Beaded Trim 1439**

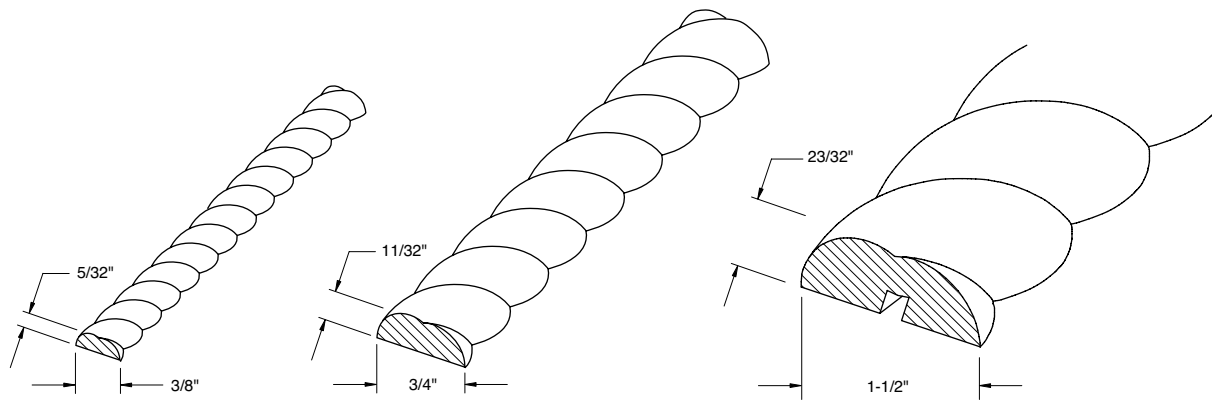
\*\* When ordering dual side profile product, specify "Face side A" or "Face side B". When ordering pre-finished product, specify "Finish side A" or "Finish side B."

Note: Drawings not to scale.





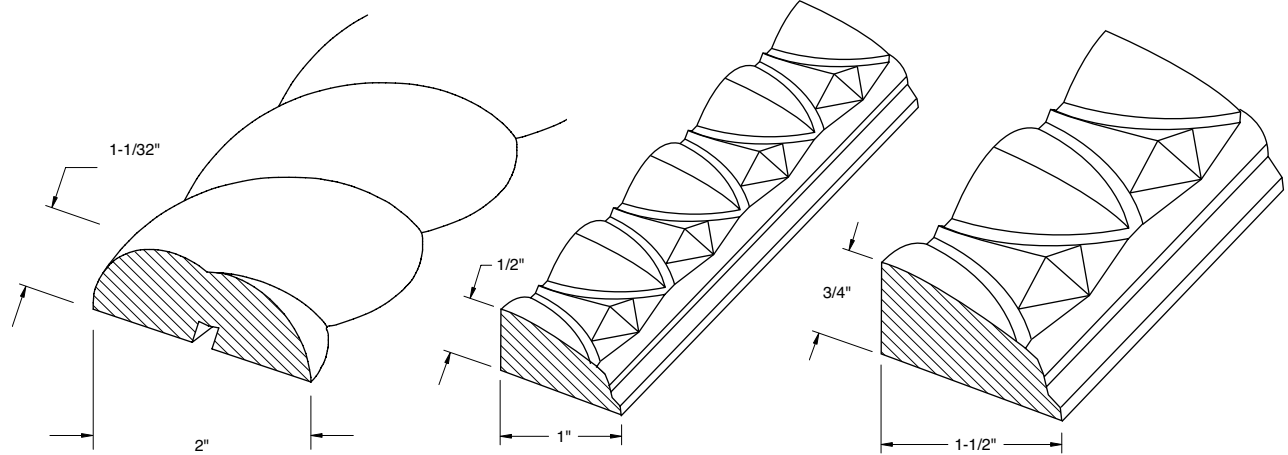
## *Trim and Accent Mouldings (continued)*



**3/8" Rope**

**3/4" Rope**

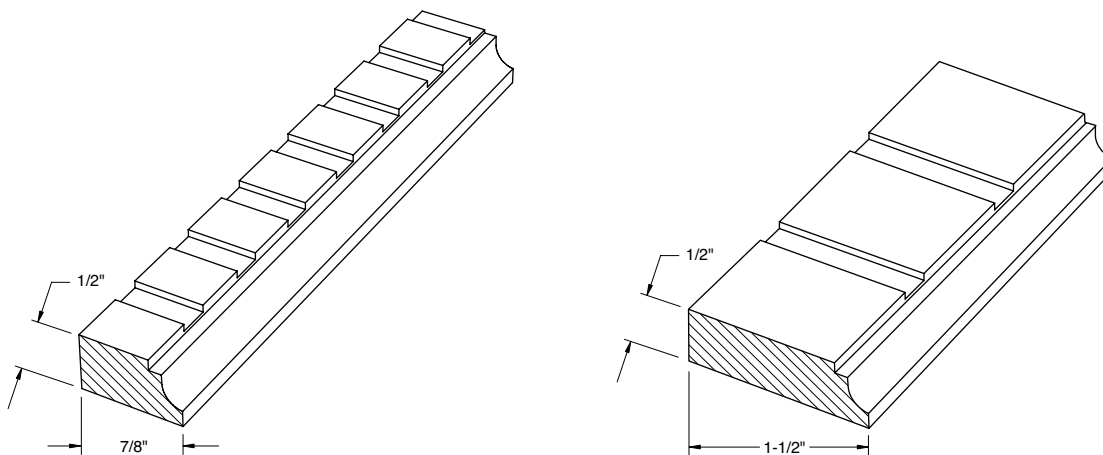
**1-1/2" Rope**



**2" Rope**

**1" Egg & Dart**

**1-1/2" Egg & Dart**



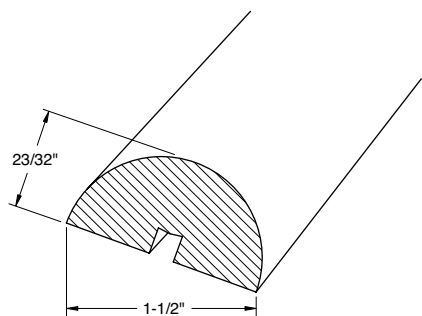
**7/8" Dentil**

**1-1/2" Dentil**

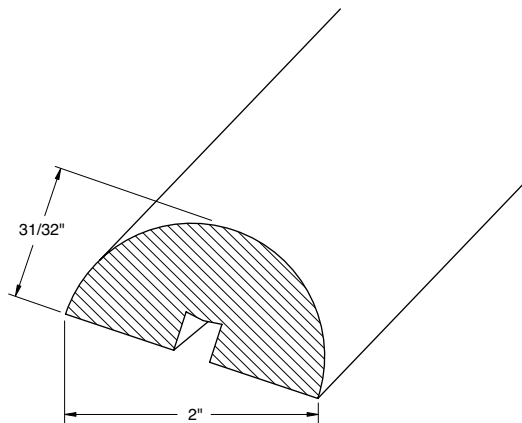
Note: Drawings not to scale.



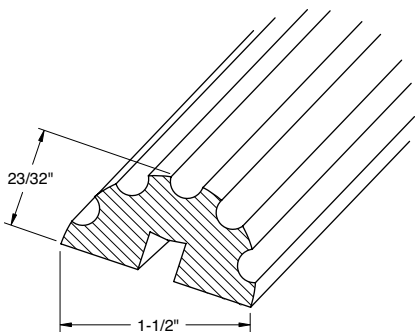
## Trim and Accent Mouldings (continued)



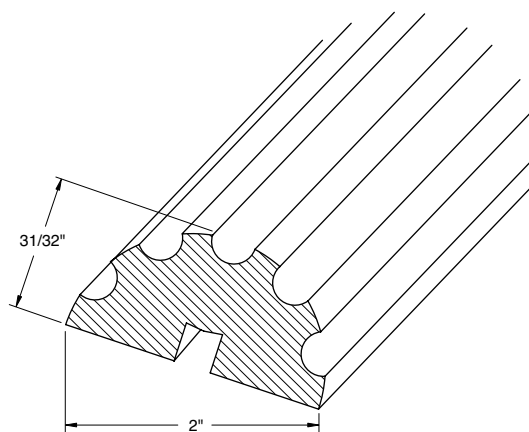
**1-1/2" Plain**



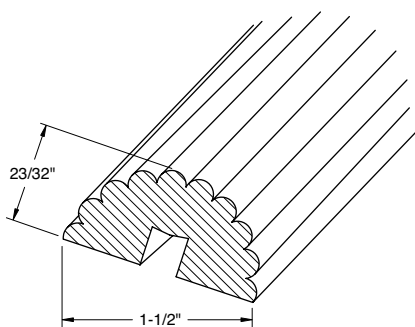
**2" Plain**



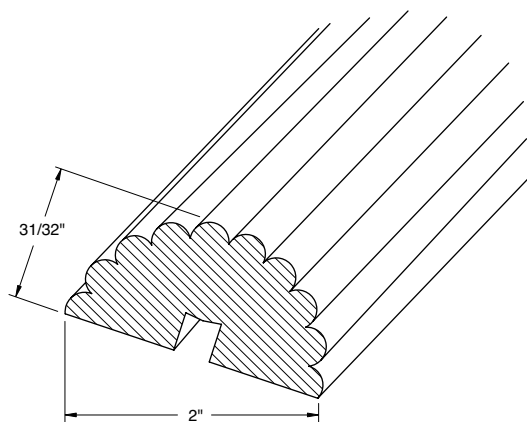
**1-1/2" Fluted**



**2" Fluted**



**1-1/2" Reeded**



**2" Reeded**

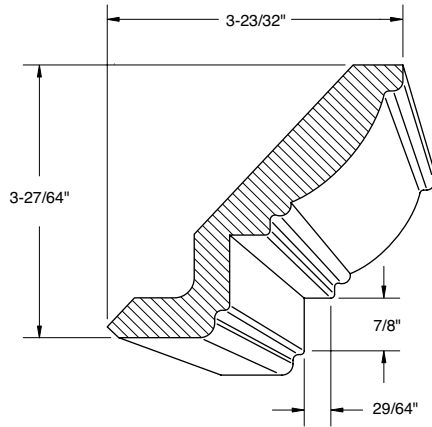
Note: Drawings not to scale.



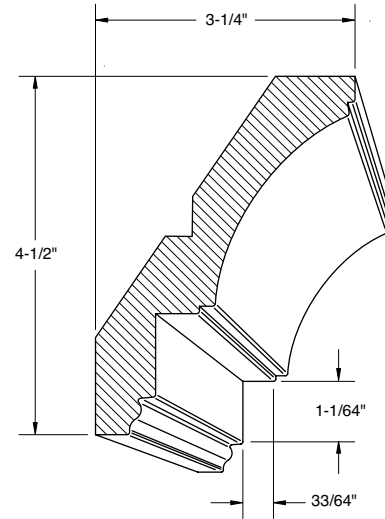




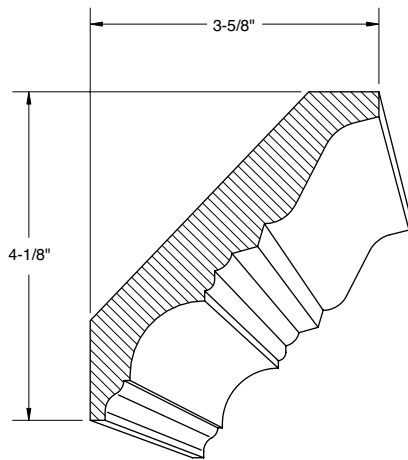
## Non-Standard Mouldings



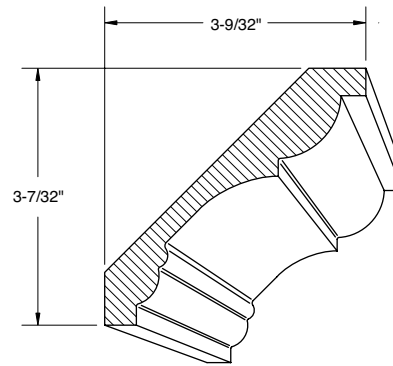
**Crown 1424\***



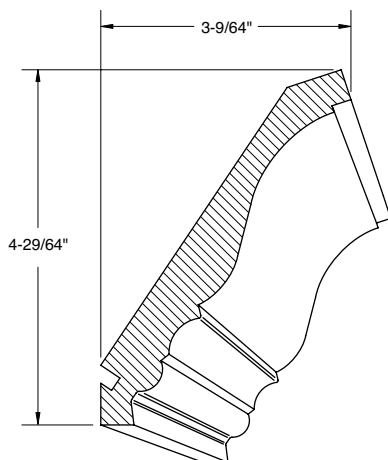
**Crown 2057\*\***



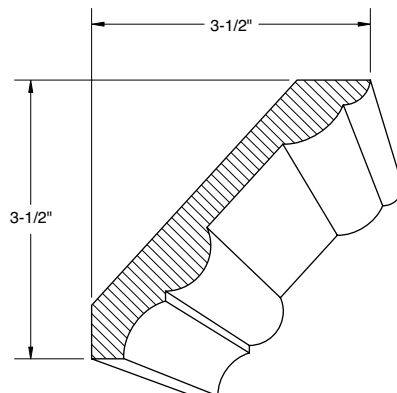
**Crown 859**



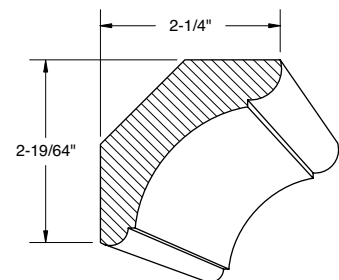
**Crown 1238**



**Crown 1550**



**Crown 2047**



**Cove Crown 120**

\* Crown moulding 1424 will accommodate 3/4" Rope.

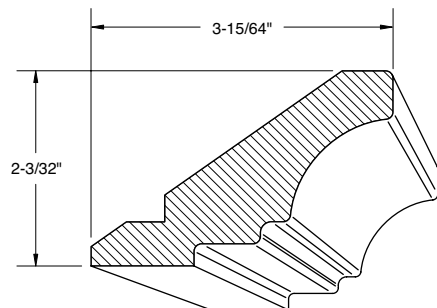
\*\* Crown moulding 2057 will accommodate 3/4" Rope, 7/8" Dentil and 1" Egg & Dart.

All profiles are subject to a setup charge for orders less than 100 L.F. See pricing page for details.

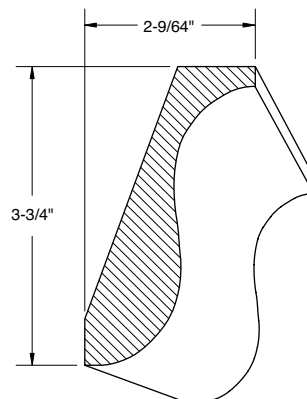
Note: Drawings not to scale.



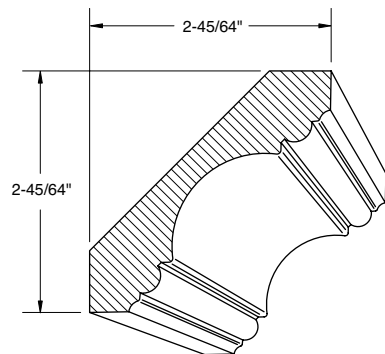
## *Non-Standard Mouldings (continued)*



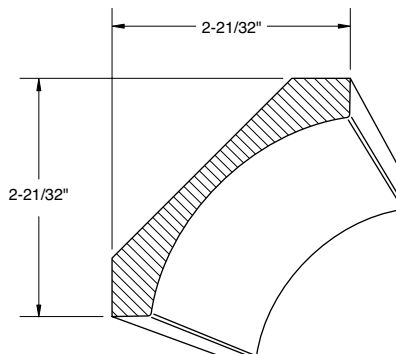
**Crown 96**



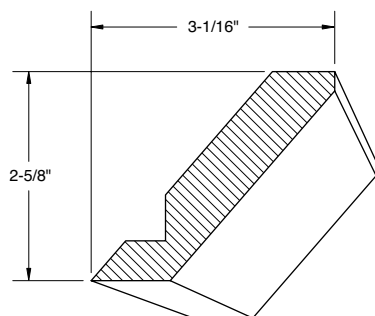
**Crown 1017**



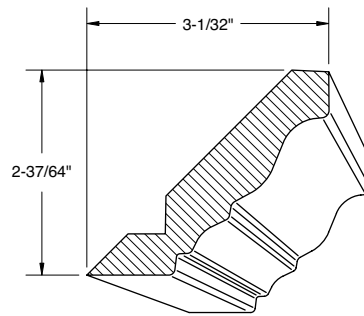
**Crown 1557**



**Crown Cove 2048**



**Shaker Crown 538**

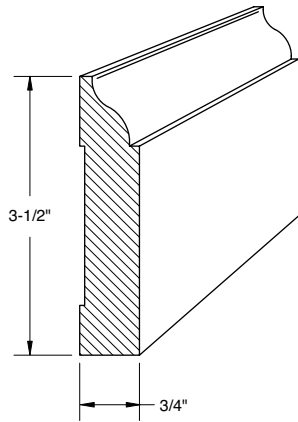


**Crown 1052**

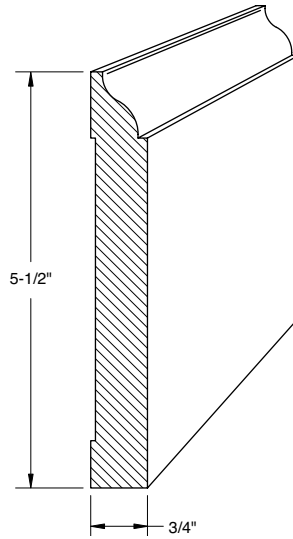
All profiles are subject to a setup charge for orders less than 100 L.F. See pricing page for details.  
Note: Drawings not to scale.



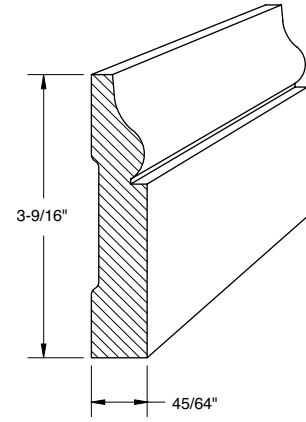
## *Non-Standard Mouldings (continued)*



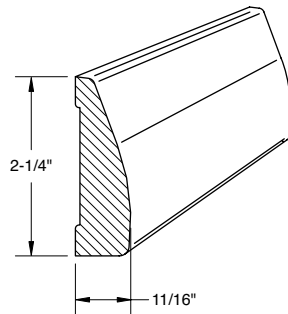
**Base Moulding 897**



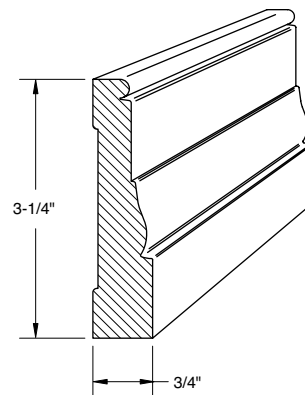
**Base Moulding 898**



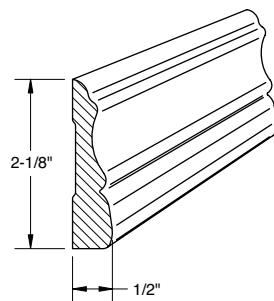
**Base Moulding 2021**



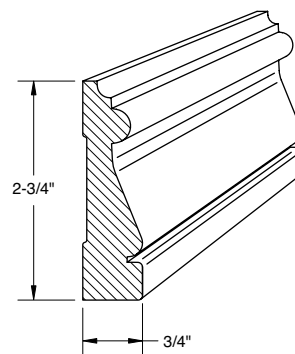
**Case Moulding 9**



**Case Moulding 466**



**Case Moulding 737**

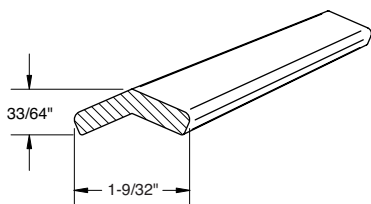


**Case Moulding 999**

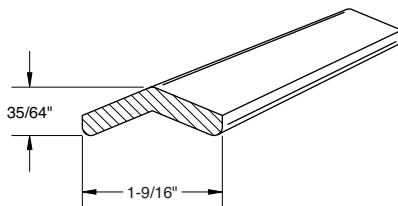
All profiles are subject to a setup charge for orders less than 100 L.F. See pricing page for details.  
Note: Drawings not to scale.



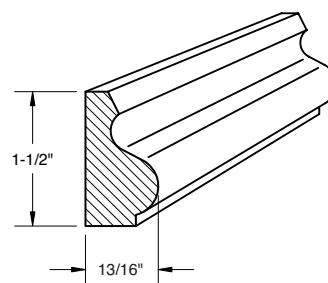
## *Non-Standard Mouldings (continued)*



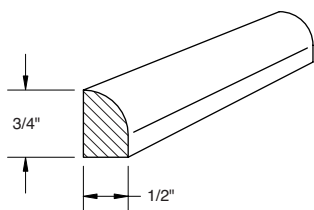
**135° Outside  
Corner 1319**



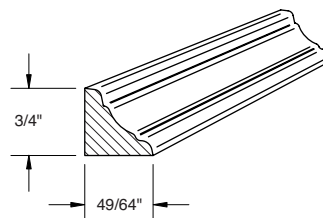
**135° Outside  
Corner 1995**



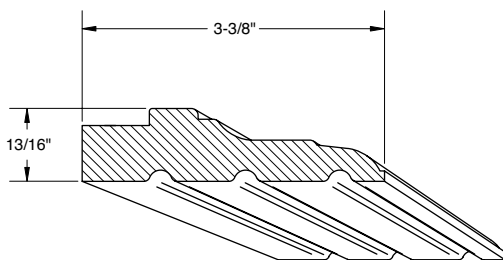
**Base Cap 860**



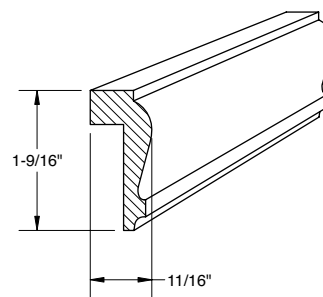
**Base Shoe Moulding 583**



**Inside Corner 474**



**Plate Rail Moulding 596**



**Wainscot Cap Moulding 8**

All profiles are subject to a setup charge for orders less than 100 L.F. See pricing page for details.  
Note: Drawings not to scale.





## *Moulding Assembly Options*

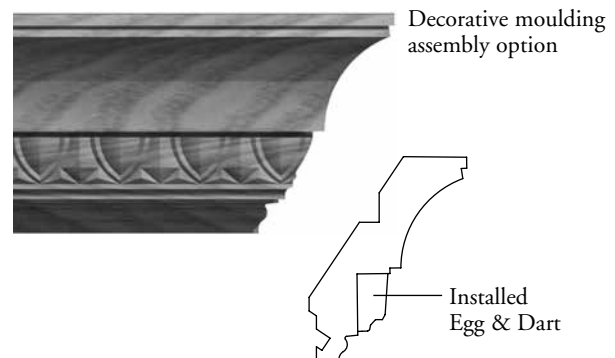
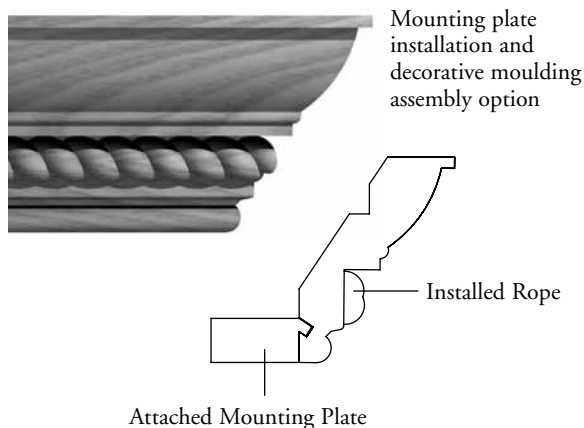
Conestoga's pre-assembled moulding options provide a cost effective alternative to installing mounting cleats and decorative accessory mouldings. By eliminating the need to assemble mouldings in your shop, you can increase throughput and focus your skilled labor on more profitable tasks. Assembled mouldings also finish more attractively, providing additional area for glaze hang up, accentuating the entire profile of decorative accessory mouldings.

### **Mounting Plate Installation Option**

- 
- The Mounting Plate Installation option allows the 384 and 470 mounting plates to be pre-applied to select crown and light rail mouldings. For assembled mouldings over 8 ft. in length, mounting plate will consist of two lengths cut to size.
- Eligible profiles include the 342, 343, 344, 1621, 1622 and 1623 Crowns, 345 Reversible Frieze and 1448 Light Rail.
- 
- To order designate "Mounting Plate Installation" on your order form next to each piece of moulding to be preassembled.
- Finishing option is available for preassembled mouldings. See the Solid Wood Finishing Program section for pricing and finish availability.
- Add 2 days to lead-time.

### **Decorative Moulding Assembly Option**

- 
- The Decorative Moulding Assembly option allows customers to order select crown mouldings with accessory mouldings preassembled.
- 342, 343, 344 Crown mouldings can be combined with the 7/8" Dentil, 1" Egg & Dart and 3/4" Rope mouldings.
- 1621, 1622 and 1623 Crown mouldings can be combined with the 1-1/2" Dentil, Egg & Dart and Rope mouldings.
- 
- To order designate "Decorative Moulding Assembly" next to each piece of moulding to be preassembled.
- Finishing option is available for preassembled decorative mouldings. See the Solid Wood Finishing Program section for pricing and finish availability.
- Add 2 days to lead-time.





### *Special Order Moulding Program*

---

- 8 foot special order mouldings are categorized and priced by width. Moulding width is the smallest whole-inch dimension necessary to manufacture that particular moulding profile. For instance, 1.01" wide moulding pricing is in the 2" moulding width column. This is typical in all sizes.
- Special order mouldings are only available in choice grade material. Standard 8 foot length is 94" to 97". Any length greater than 97" and up to 12 foot lengths may be specified in certain species for an upcharge per piece. Extended 10 to 15 day lead-times apply to 10 to 12 foot mouldings. Contact Customer Service for specie availability and pricing.



### *Random Length Cabinet Framing*

---

- Random length cabinet framing is available only in prime grade material. Sizes shown in the pricing table below are for 3/4" thick "surfaced four sides" (S4S) square stock. Optional sanding is available at no additional cost. Specify sanded or unsanded when ordering.
- These pieces may contain a limited amount of defects and color variation admitted in the established rules of the National Hardwood Lumber Association for this grade. 8 foot lengths of material will be approximately 80% defect free. Pieces under 8 foot will be approximately 90% defect free. Defect locations will vary.

### *Ordering and Sizing Specifications*

---

- Framing is categorized and priced by width. Framing width refers to the smallest whole-inch dimension necessary to manufacture that particular frame. If the framing is 1.01" wide, the appropriate pricing will be located in the 2" framing width column. This rule is typical in all sizes. For clarification, see examples below.
  - ❖ Framing 1-1/4" wide is considered a 2" width.
  - ❖ Framing 2-11/16" wide is considered a 3" width.
- Random length framing is available in 4 to 12 foot lengths. Exact lengths may not be specified.
- Framing wider than 5-1/16" may have one glue joint running the entire length of the framing.
- Minimum order quantity is 100 feet.
- Optional grooving for Conestoga's Cabinet System's assembly splines is available; refer to Random Length Moulding pricing matrix in this section. Stile and rail material must be ordered separately.